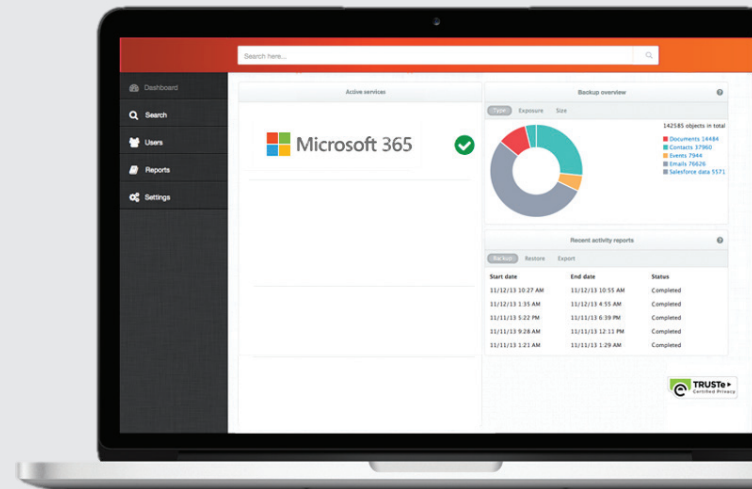


## Backup and recovery of business data.

- Automated backup of email, contacts and calendar.
- Automated backup of files, folders and document libraries in SharePoint online.
- Rapid restores.
- Powerful search and filtering.
- Comprehensive overview.



- ✓ **85% of organizations** using Microsoft 365 have suffered email breaches in the last 12 months.
- ✓ **67% of IT leaders** report an increase in data breaches due to remote work.
- ✓ **26% of IT leaders** report experiencing a severe data loss incident after an employee accidentally shared data via email.
- ✓ **60% of SMBs** that fall victim to a data breach end up closing in just six months.

We strive to keep the Services up and running; however, all online services suffer occasional disruptions and outages, and Microsoft is not liable for any disruption or loss you may suffer as a result. In the event of an outage, you may not be able to retrieve Your Content or Data that you've stored. **We recommend that you regularly backup Your Content and Data that you store on the Services or store using Third-Party Apps and Services.**

Microsoft Services Agreement, Section 6b



### STL Business & Technology Solutions

501 S. Towanda Barnes Rd., Bldg. B  
Bloomington, IL 61705

**309-661-7851**

*poweredbystl.com*

## Axcient

Leverage the knowledge of an  
industry leader.